

City of Raleigh  
Walkable  
Midtown  
Plan





# About the Plan

- Originated to consider infrastructure and other public improvements for an area seeing significant growth
- Adopted by City Council in late 2020; implementation under way





# Walkable Midtown Vision and Goals

- Midtown continues to grow into a more walkable and urban center
- New Beltline crossings
- Improved transit frequency and options
- Crabtree area becomes a waterfront district with high density and waterfront public places
- Improved greenway and sidewalk connectivity to and through Midtown





# Big Move: Crossing the Beltline

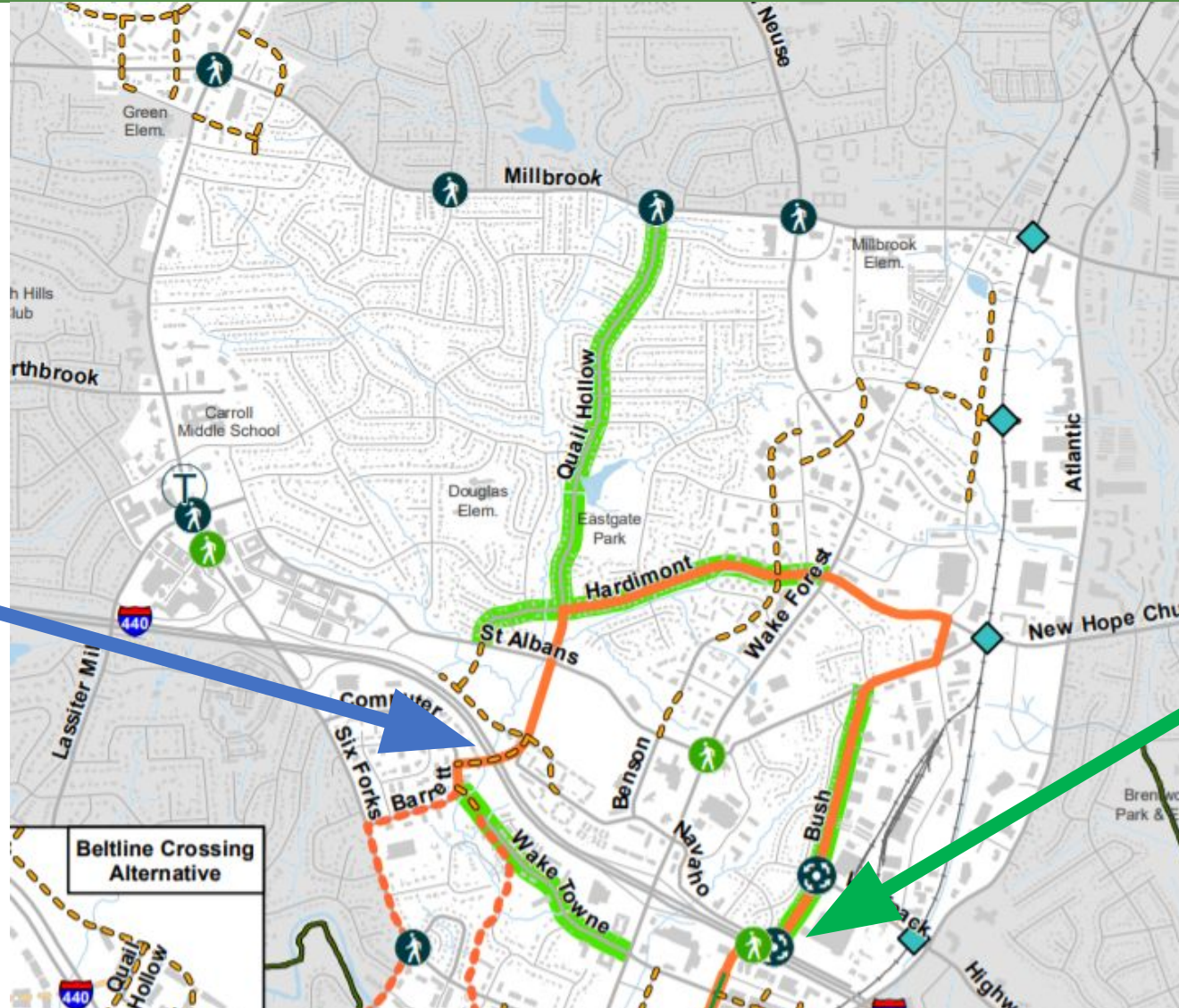
- Two new bridges
  - One critical multimodal connection between Six Forks and Wake Forest
  - One bike/ped crossing connecting Midtown East with Wake Tech and points north





# Big Move: Crossing the Beltline

Multimodal connection between Six Forks and Wake Forest

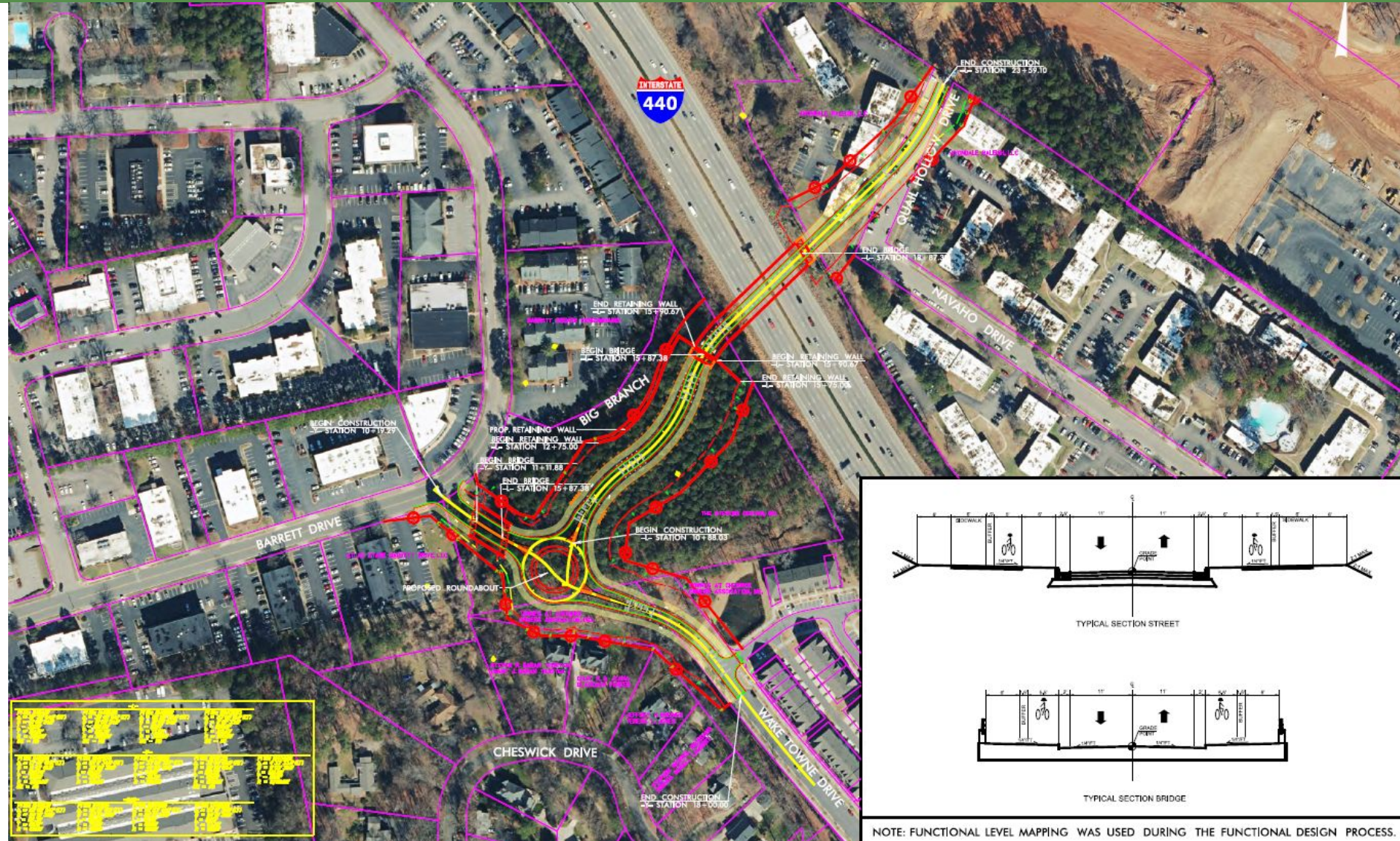


Pedestrian crossing connecting Midtown East with Wake Tech and points north



# Big Move: Crossing the Beltline

- Study of alignment alternatives completed
- Recommended alignment selected
- Advanced design is next step
- Construction funding to be identified





# Big Move: The Midtown Ring

- A safe and comfortable way to connect to all destinations in Midtown
- Uses greenways, new bridges, protected bike lanes, and green streets
- Provides space for recreation, no-carbon transportation



1 On-street one-way separated bike path and sidewalk



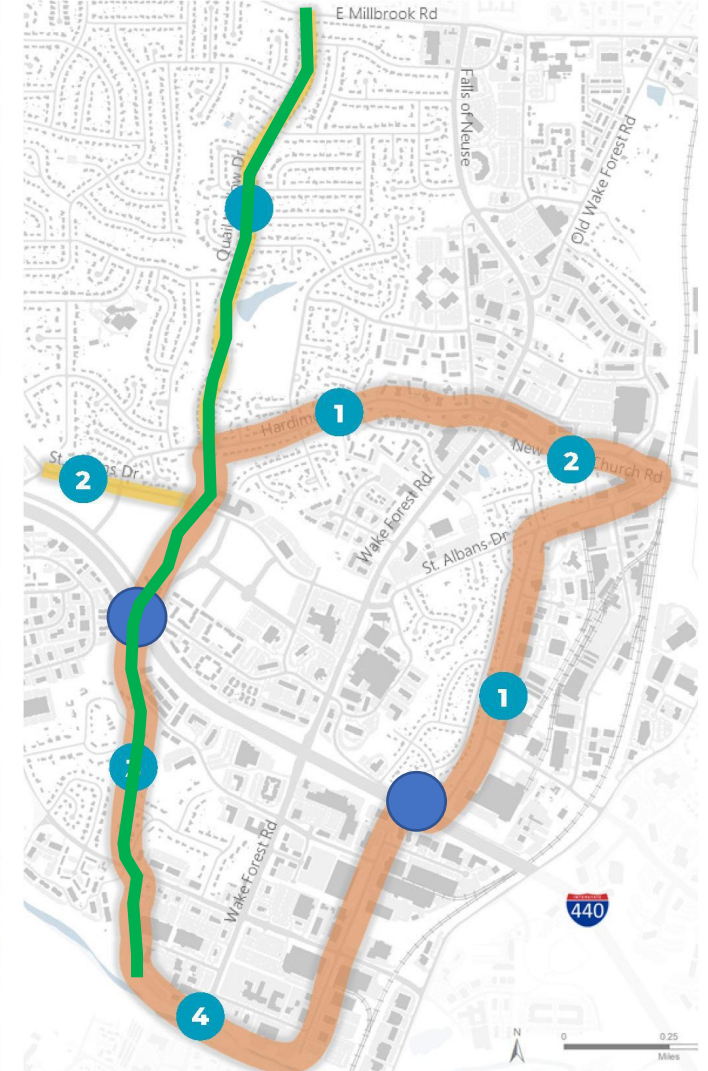
2 On-street two-way separated bike path and sidewalk



3 Off-street multi-use path



4 Greenway





# Big Move 5: The Midtown Ring





# Big Move: Midtown Waterfront District

- Midtown currently turns its back on the Crabtree
- Plan reverses that, creating a focal point
- A resilient waterfront park does double duty as park and stormwater control
- City already has extensive land holdings; study could identify additional areas for expansion





# Big Move: Midtown Waterfront District

- Many examples from other cities that have reclaimed neglected areas and improved stormwater resilience
- Fourth Ward Park in Atlanta





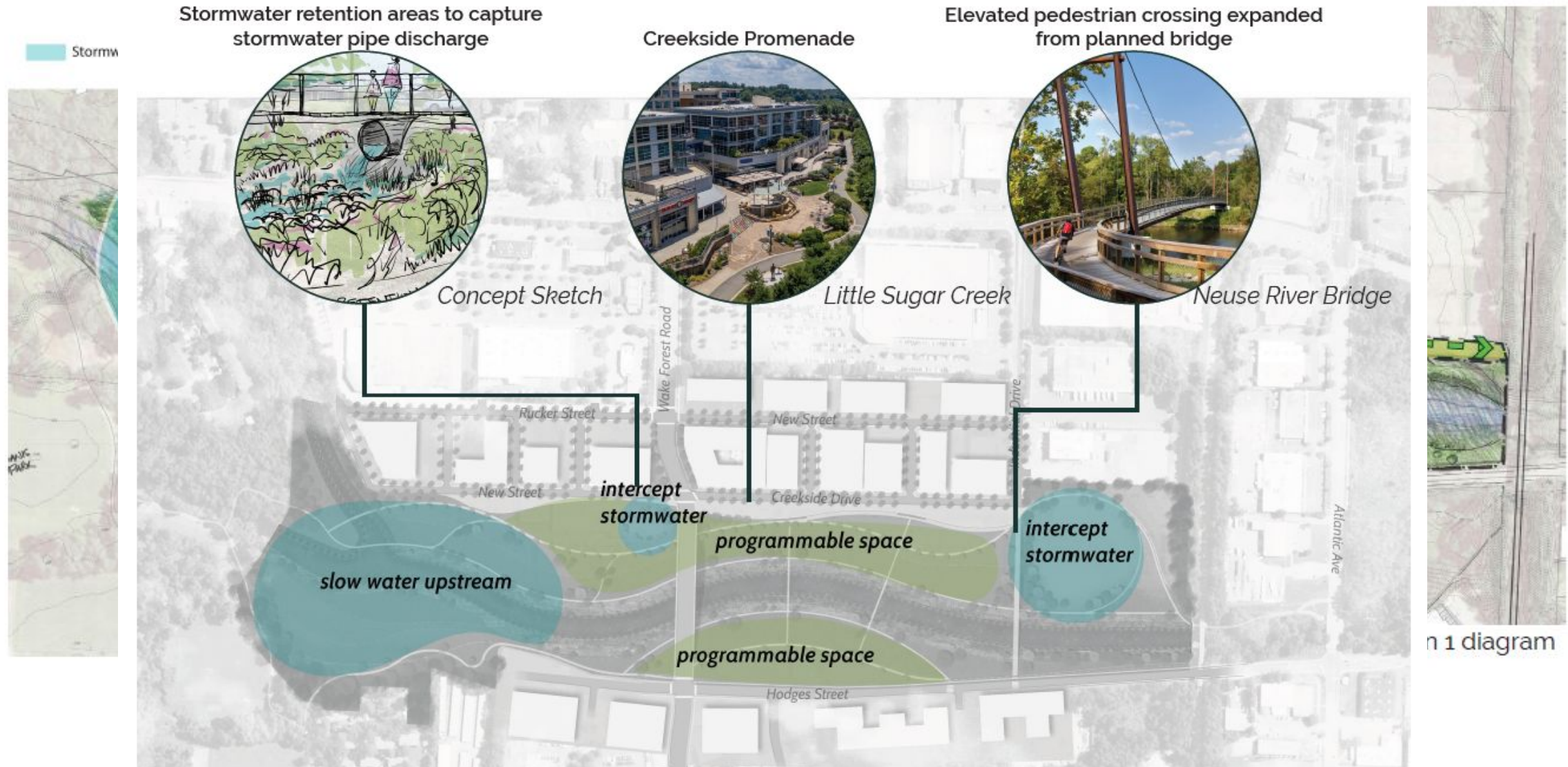
# Waterfront Park and District Updates

- City partnered with NC State College of Design on study of waterfront area
- Explored current conditions and mapped out program for implementation





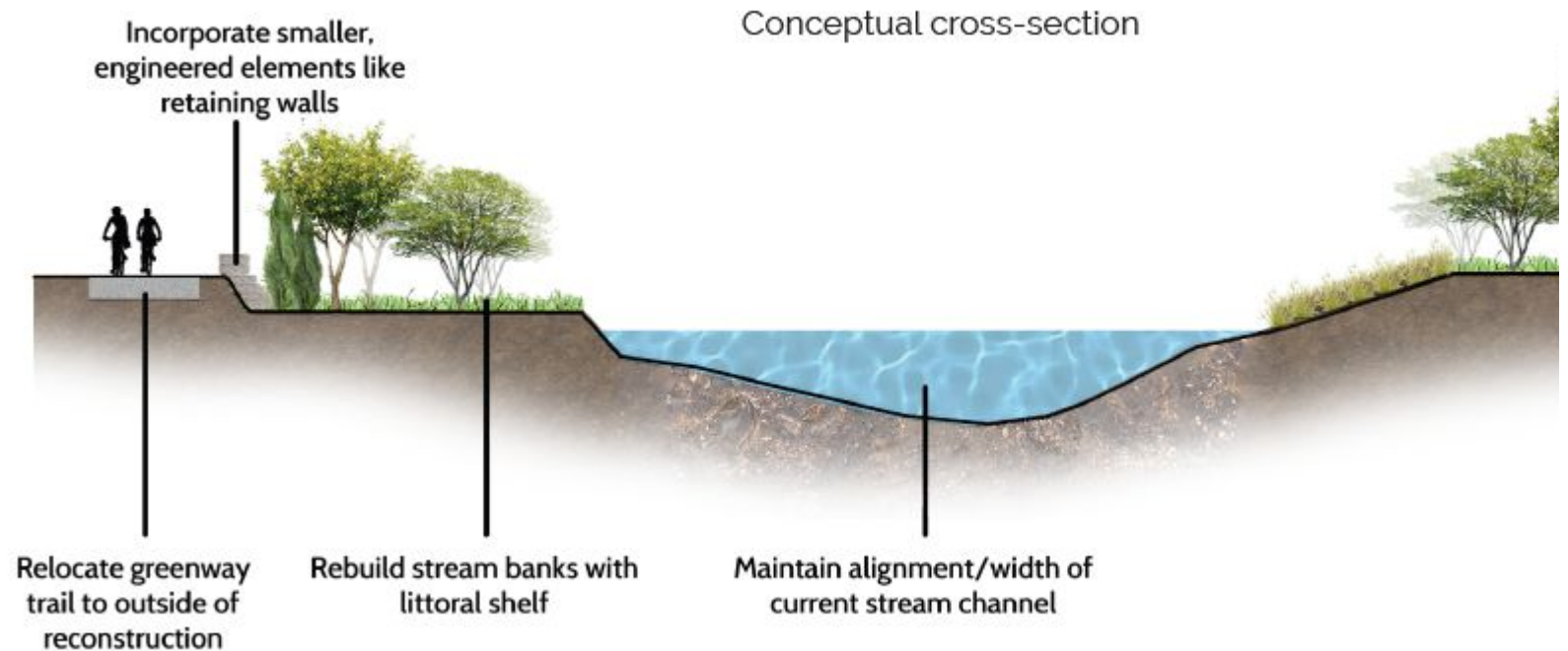
# Waterfront Park and District Study





# Waterfront Park and District: Next Steps

- Floodplain study/hydraulic modeling to determine cost/benefit of different approaches
- Stakeholder conversations
- Develop public space/stormwater improvement plan
- MSD conversations





# Implementation: Near-Term

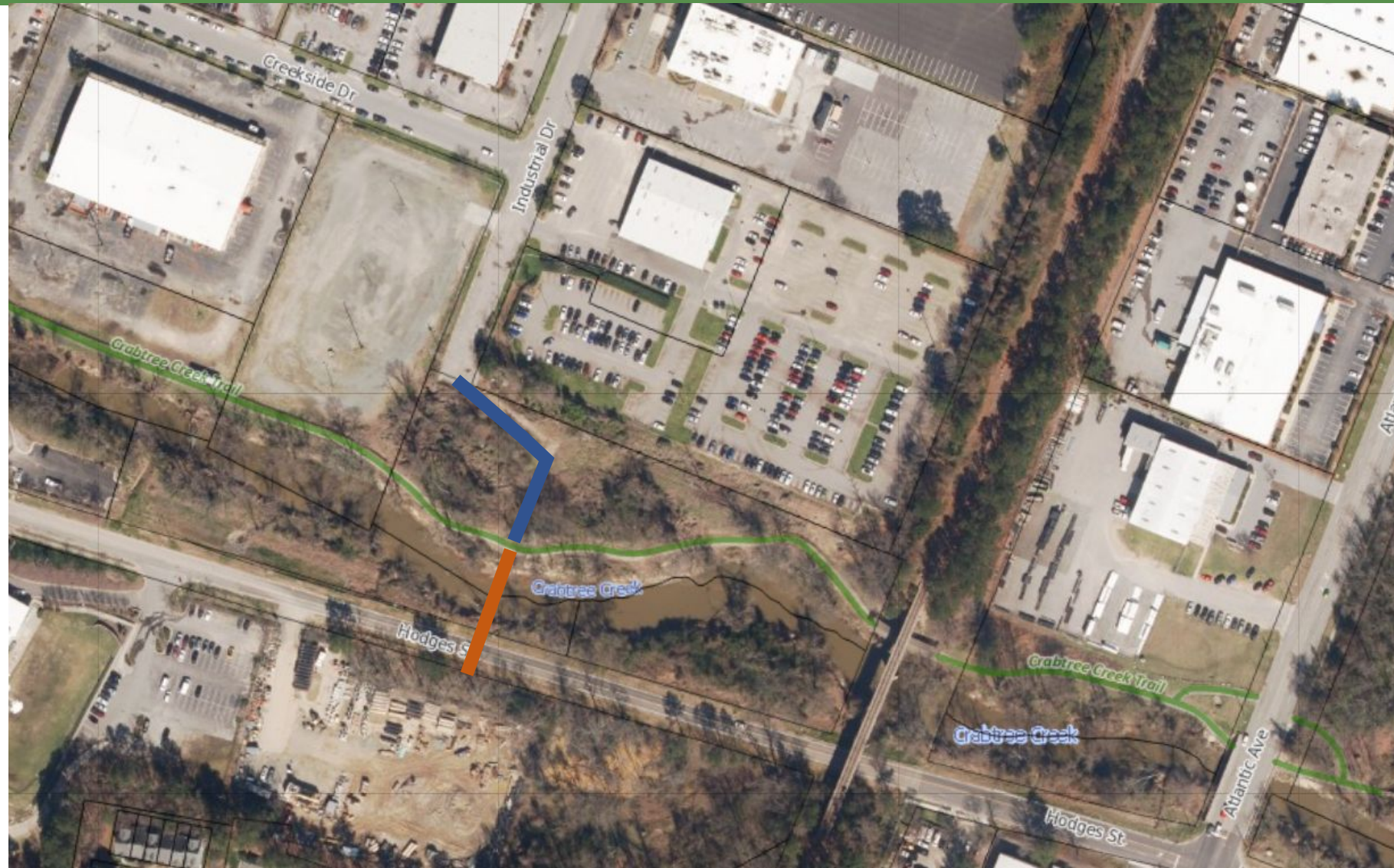
- Acquired key parcel along Crabtree
- Allows for Midtown Ring Connection - from Industrial Dr. to greenway
- Critical part of Waterfront Park concept





# Implementation: Near-Term

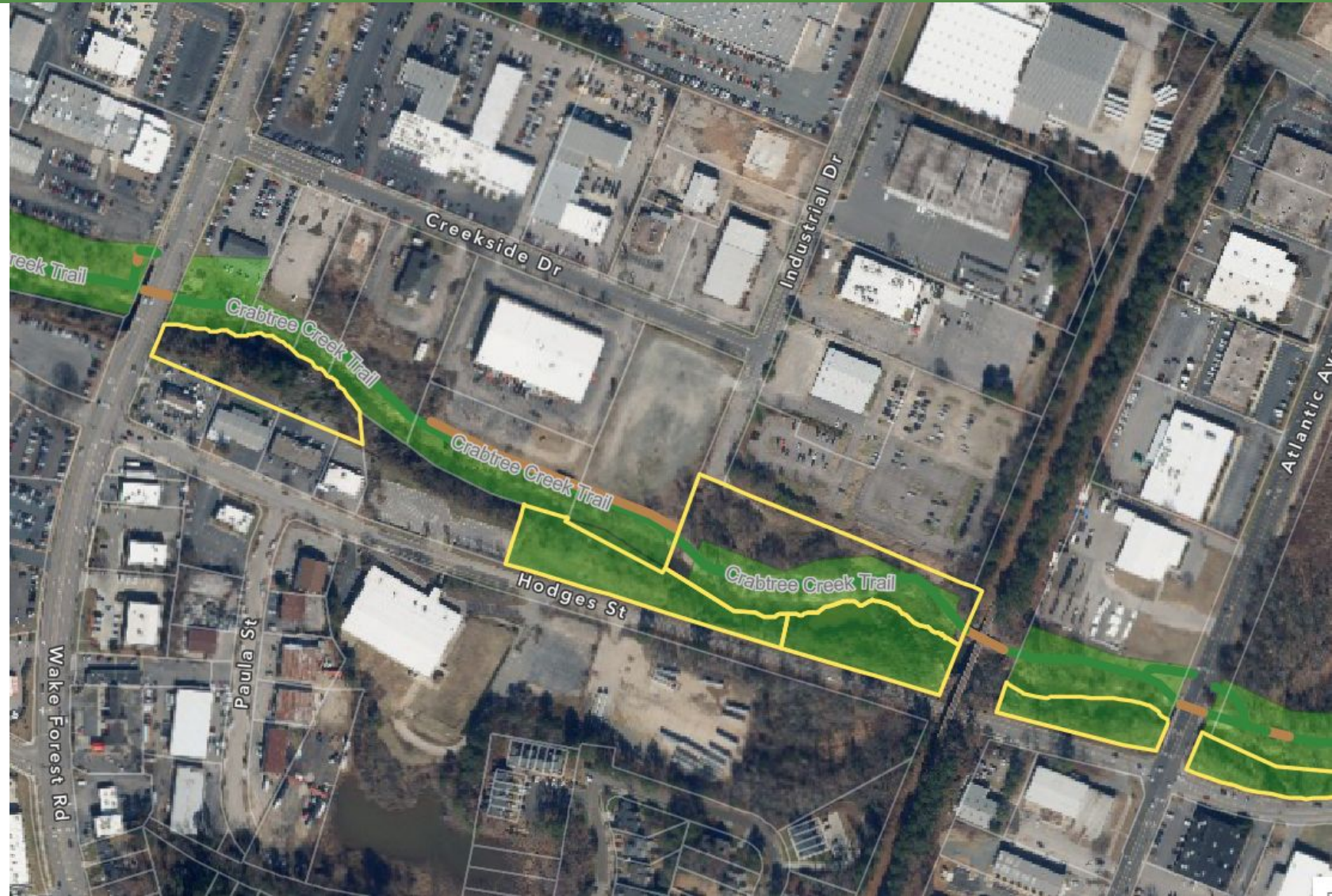
- New greenway connection from Industrial Drive under construction (shown in blue)
- New water crossing from Hodges Street development (orange)





# Waterfront District: Existing Assets

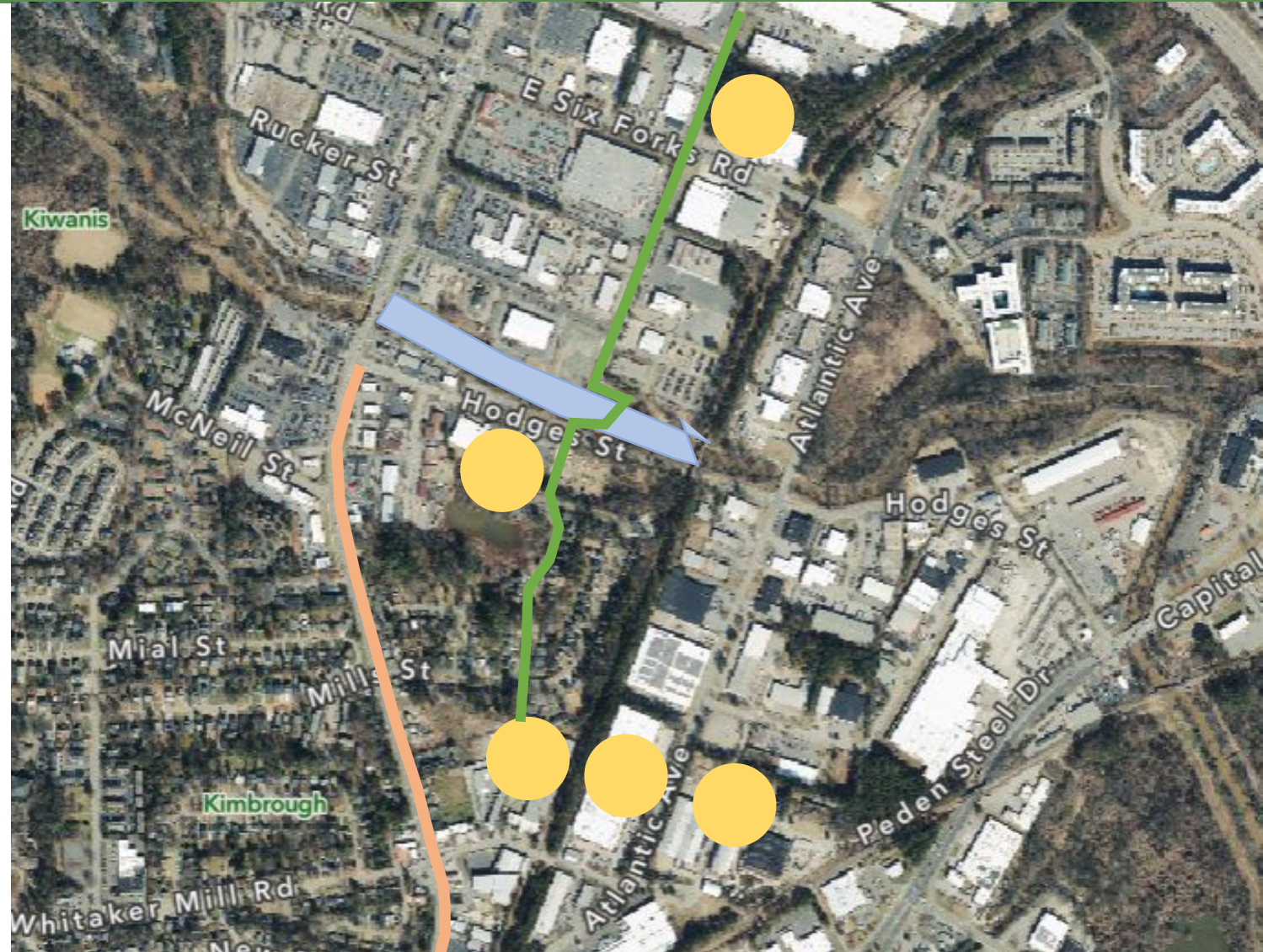
- City already owns or has easements along much of Crabtree
- Additional acquisition possible but not necessary
- Large amounts of residential development under way





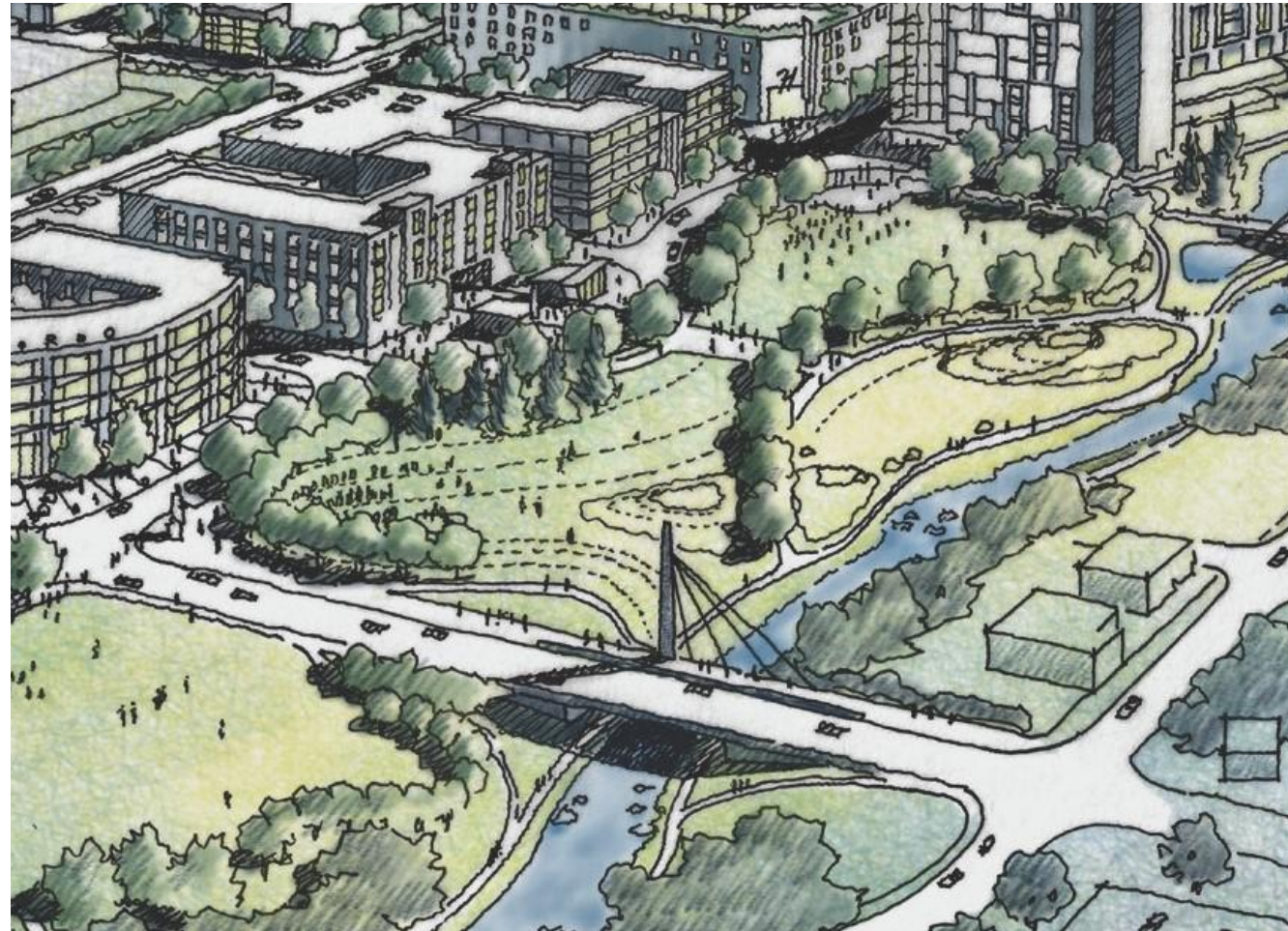
# Waterfront District Development

- Six Forks/Industrial Apartments
- Hodges Street Apartments
- East End Market
- Loading Dock
- Raleigh Iron Works
- Wake Forest Road sidewalk installation





# Waterfront Park and District Study





# Q&A